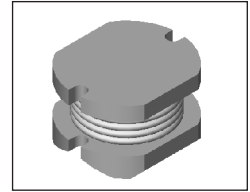


# SMT Power Inductor

## SI523 Type

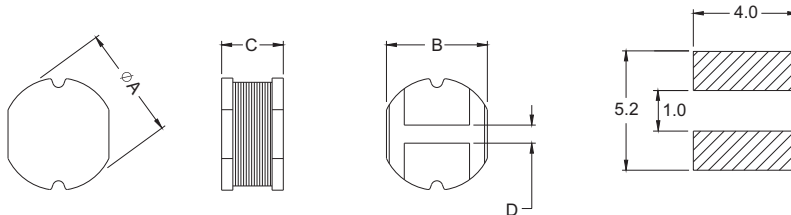
### Features

- RoHS compliant.
- Low profile (2.3mm max. Height) SMD type.
- Unshielded.
- Self-leads ,suitable for high density mounting.
- High energy storage and low DCR.
- Provided with embossed carrier tape packing.
- Ideal for power source circuits, DC-DC converter, DC-AC inverters inductor applications.
- In addition to the standard versions shown here, customized inductors are available to meet your exact requirements



### Mechanical Dimension :

#### RECOMMENDED PAD PATTERNS



UNIT:mm/inch  
 A = 4.5±0.15 / 0.177±0.006  
 B = 4.0±0.15 / 0.157±0.006  
 C = 2.3/0.091 Max.  
 D = 1.0±0.2 / 0.039±0.008

### Electrical Characteristics : 25°C, 100KHz, 0.1V

PART NO.	L <sup>1</sup> (uH)	DCR (Ω) MAX	I <sub>rated</sub> <sup>2</sup> (Adc)
SI523 - 3R9	3.9	0.068	1.60
SI523 - 4R7	4.7	0.087	1.45
SI523 - 8R2	8.2	0.150	1.10
SI523 - 100	10.0	0.195	1.00
SI523 - 150	15.0	0.260	0.90
SI523 - 220	22.0	0.383	0.67
SI523 - 470	47.0	0.750	0.44

1. Tolerance of inductance: ±15% for 3.9~8.2uH, ±10% for 10~47uH.
2. I<sub>rated</sub> is the DC current which cause the inductance drop less than 10% of its nominal inductance without current and the surface temperature of the part increase less than 45°C.
3. Operating temperature : -20°C to 105°C (including self-temperature rise).



DELTA ELECTRONICS, INC.

(TAOYUAN PLANT CPBG) 252, SAN YING ROAD, KUEISAN INDUSTRIAL ZONE, TAOYUAN SHIEN, 333, TAIWAN, R.O.C.

TEL: 886-3-3591968; FAX: 886-3-3591991

<http://www.deltaww.com>